

CAP-Reform 2023 in Germany

- Congress on CAP Reform and European Livestock
Mittwoch, 16. November 2022, Udo Hemmerling, DBV

Foto: DBV, J. Meierhöfer, 24. Juni 2022

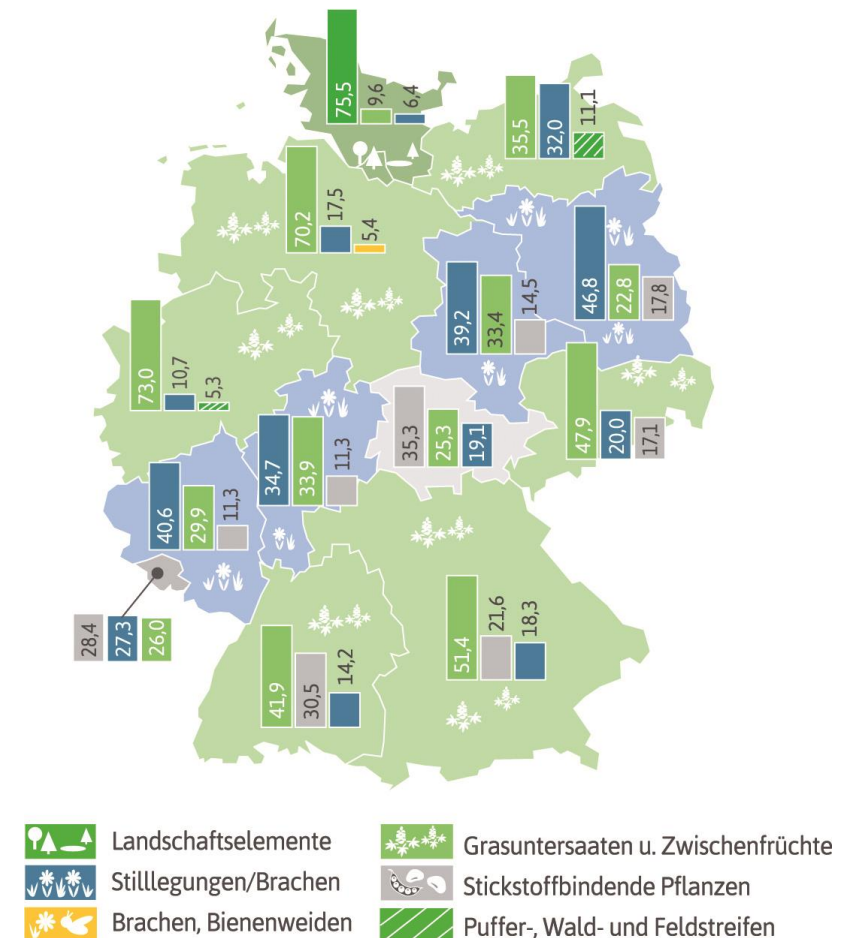
Startingpoint: CAP 2021 in Germany

- Basic-Payment 171 Euro/ha as a national flatrate
- Greening 83 Euro/ha: Mainly catch crops, Set aside, N-fixing crops
- No coupled payments
- First hectares: 50 Euro/ha to 30 ha; 30 Euro/ha for 31-46 ha
- Transfer to pillar 2: 300 Mio. Euro p.a. (6% of pillar 1)

Ökologische Vorrangflächen im Greening

Vorwiegende Maßnahmen 2021 (gewichtete Flächen)

in Prozent der beantragten ÖVF je Bundesland



CAP Direct Payments to Farmers from 2023 (Pillar 1)

- Basic-Payment 156 Euro
- 23% Eco Schemes
(ca. 1.000 Mio. Euro p.a.)
- First hectares: 69 Euro/ha to 40 ha; 42 Euro/ha for 41- 60 ha, no Capping
- Coupled payments: 1 % each for suckler cows and sheep/goats
- Young Farmers, up to 120 ha
- No premium entitlements any more

Einkommensgrundstützung für
Nachhaltigkeit

= Neue, erweiterte Konditionalität (GLÖZ, GAB)

156 €/ha

Eco Schemes

= Einjährige AUKM (freiwillig für Landwirte)

30 – 1.300 €/ha

Umverteilungseink.-stützung

69 & 42 €/ha

Gekoppelte Tierprämie

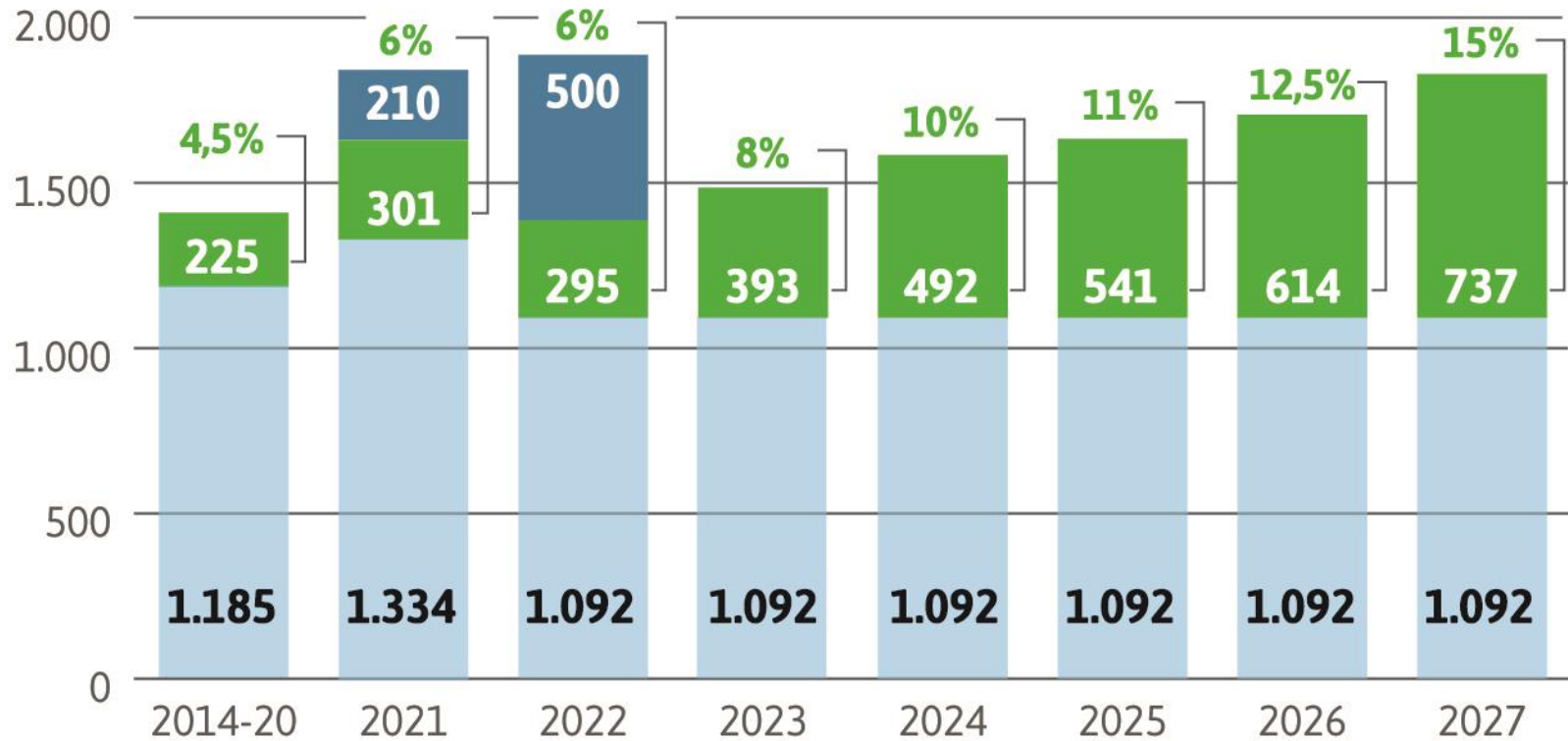
78 & 35 €/Tier

Junglandwirteeink.-stützung

134 €/ha

CAP-Funding in Pillar 2 for Germany

n % Umschichtungssatz von 1. in die 2. Säule



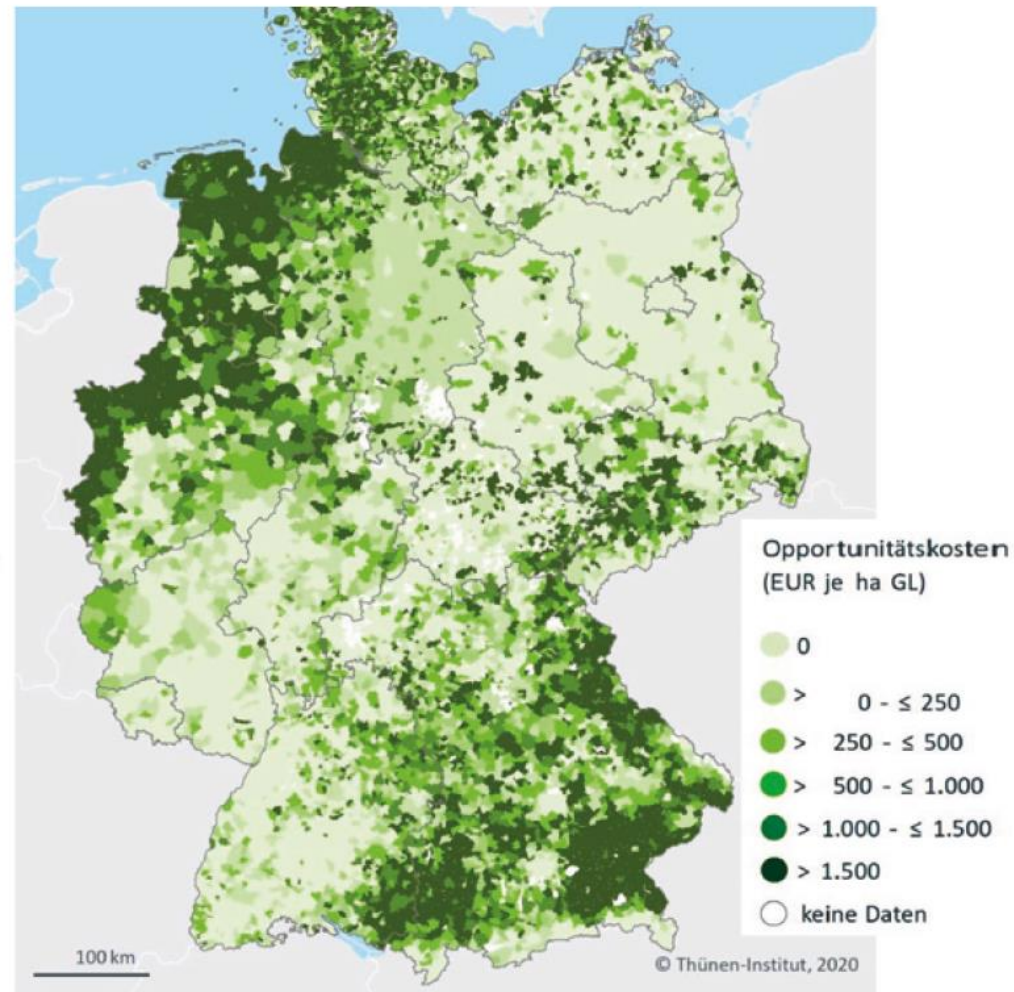
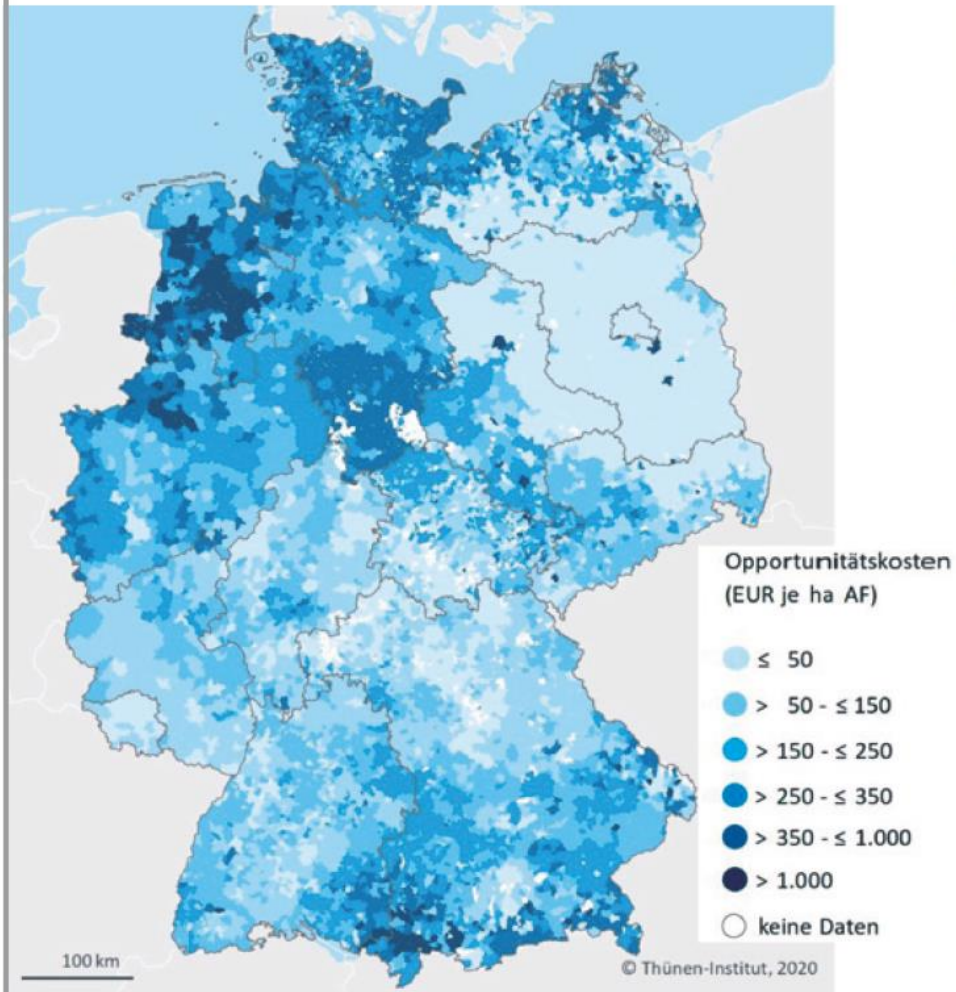
■ ELER originär
 ■ Direktzahlungs-Umschichtung
 ■ EU-Wiederaufbaufonds (EURI)

Eco Schemes: Many offers are not really attractive

| (2023: adjustment max. + 30%; 2024 ff.: adjustment max. + 10 %) | Arable Land | Permanent Grassland | Permanent Crops |
|---|--|--|-----------------|
| 1a) additional non productive arable land (1-6 % additional to GAEC 8) | < 1 % 1.300 €/ha 1 – 2 % 500 €/ha 2 – 6 % 300 €/ha | | |
| 1b) wildflowering strips/fields additional to 1a | TopUp 150 €/ha | | TopUp 150 €/ha |
| 1c) wildflowering strips/fields | | | TopUp 150 €/ha |
| 1d) „old grass“ on Permanent Grasland (no cutting/grazing of the grass fodder strips before 1 September) | | < 1 % 900 €/ha 1 – 3 % 400 €/ha 3 – 6 % 200 €/ha | |
| 2) Multicropping in Arable Farming (5 crops) | 45 €/ha | | |
| 3) Keeping Agroforestry | 60 €/ha | 60 €/ha | |
| 4) Extensification on Grassland Farming (Farm level) (max stocking rate 1.4 LU/ha) | | 115-100 €/ha | |
| 5) Extensive Grassland with min. 4 Bio-Div. species | | 240-225 €/ha | |
| 6) No use of Plant Protection Products | 130-50 €/ha | | 130-110 €/ha |
| 7) Farming in Natura 2000 areas | 40 €/ha | 40 €/ha | 40 €/ha |

Opportunitätskosten für Ackerbrache*

Opportunitätskosten für Altgrasstreifen*



Quelle: Thünen-Institut

* Grenzopportunitätskosten bei 6 Prozent Ackerbrache (einjährig) und bei 6 Prozent Grünland-Altgrasstreifen

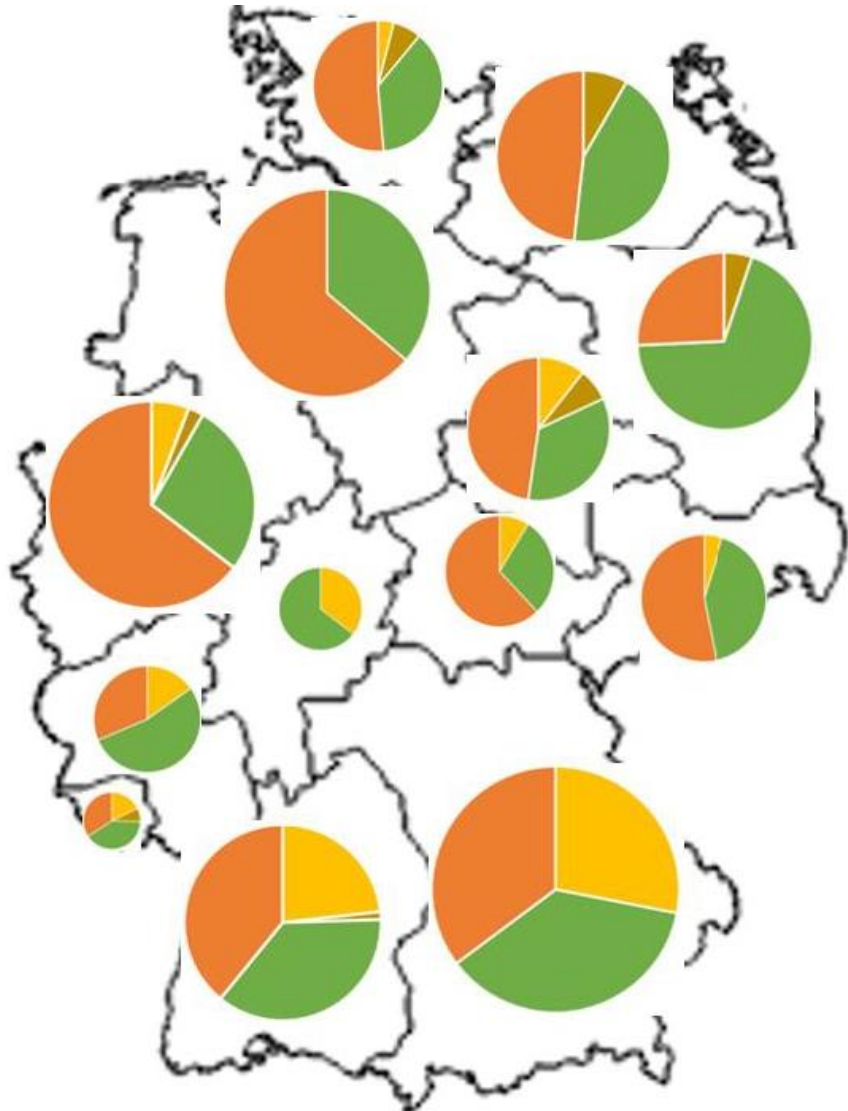
New premium for suckler cows

- Indikation: 77,93 Euro/ suckler cow in 2023
(plus minus 10 %)
- Total exception of dairy farms
- Min. 3 cows
- from 16. May bis 30. September on the farm
- Documentation of daily grazing („grazing diary“)

New premium for sheep/goats

- Indikation: 34,81 Euro/ sheep in 2023
(plus minus 10 %)
- min 6 animals
- Age > 10 months
- from 16. May bis 30. September on the farm
- Documentation of daily grazing („grazing diary“)

Distribution of area-oriented payments in pillar 2



Deutschland



- Less Favoured Areas
- Natura 2000 Payments
- Organic Farming
- Agri-Environmental and Climate Measures

Preliminary DBV assessment for CAP in Germany

- In certain regions basic payment is too low to fulfill conditionality
- Eco Schemes are often not attractive / partially no appropriate offer for dairy farms / farms with permanent grassland
- „Cannibalism“ between support of Eco Schemes (federal decision) and AECM (state decision)
- Organic farms: Higher payments from pillar 2 do not compensate losses in pillar 1



Deutscher Bauernverband e. V.

Claire-Waldoff-Straße 7

10117 Berlin

Udo Hemmerling, stellv. Generalsekretär



DieDeutschenBauern



@Bauern_Verband