

Mediterranean pastoral open habitats  
are an important resource.

Let's share our knowledge  
to preserve their biodiversity !



If you're a breeder, a technician, a teacher,  
a student, a representative of a territorial  
community or government body,  
an elected representative, then...

**HELP TO SHARE OUR KNOWLEDGE !**

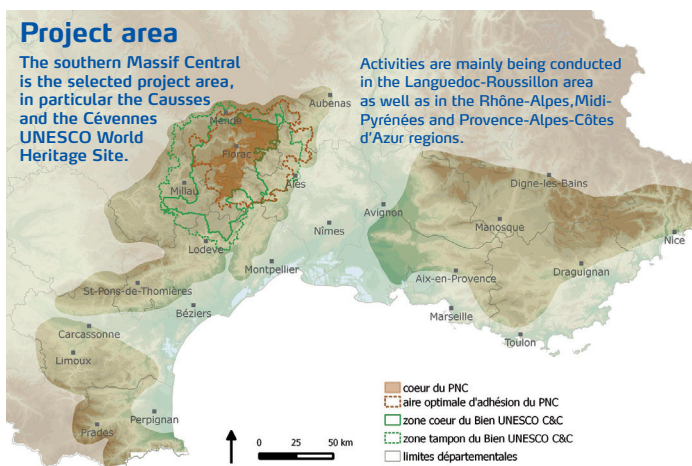
The objective of Mil'Ouv is to help to improve the breeders' use of natural resources and the state of conservation of agro-pastoral habitats in Mediterranean and sub-Mediterranean regions...

...by supporting implementation of the pastoral and ecological framework of references and furthering the dissemination of skills, information, methods and relevant advice to all those involved in agro-pastoralism.

## Project area

The southern Massif Central is the selected project area, in particular the Causses and the Cévennes UNESCO World Heritage Site.

Activities are mainly being conducted in the Languedoc-Roussillon area as well as in the Rhône-Alpes, Midi-Pyrénées and Provence-Alpes-Côtes d'Azur regions.



## Who does this concern ?

The MIL'OUV project is aimed at all those involved in agro-pastoralism :

- breeders,
- technicians,
- students,
- teachers,
- decision-makers.

## + Definition

### Open habitats :

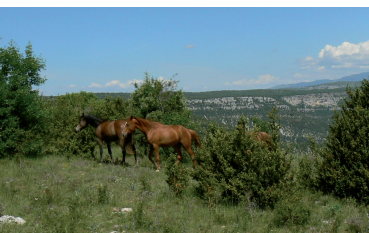
Areas of land with natural spontaneous vegetation, little brushwood cover and no trees, and where little or no mechanical cultivation is possible: limestone plateaux, grassland, scrubland and heath land.

# OPEN HABITATS – A CONSIDERABLE CHALLENGE...



## Biodiversity :

Mediterranean and sub-Mediterranean open pastoral habitats are reservoirs of biodiversity. They contain many heritage species of fauna and flora. Nearly one in two of the natural habitats and almost 30 % of the bird species that have been identified at European level as being of interest, occur here. Conservation of this heritage is closely linked to maintaining pastoralism.



## Agricultural production :

Breeders use these habitats to fulfil their production objectives, since they are an important part of their breeding systems as a source of food. As an example, a meat-producing sheep farm on the Causses can obtain most of its food supply from the land trails, including a high proportion (nearly 85%) from grass and heath land. These open habitats provide a fairly abundant, high quality resource. In addition they may be exploited at different seasons, including during a herd's periods of production (milk, reproduction).



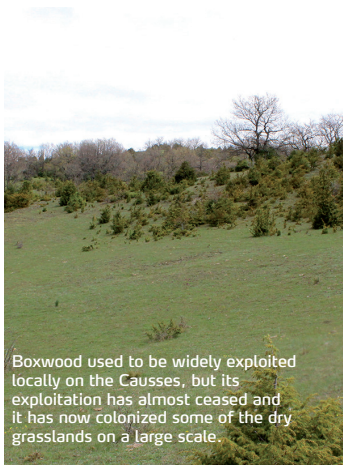
Conservation of these areas is a specific goal in our regions



## ...UNDER THREAT



The area of brush-covered land has increased by 6.5 million hectares in France since 1970. The closure of habitats is largely linked to the decline in agro-pastoral activity.



Boxwood used to be widely exploited locally on the Causses, but its exploitation has almost ceased and it has now colonized some of the dry grasslands on a large scale.



The increasingly rapid changes in an uncertain environment (changes in agricultural policies, growing environmental expectations, frequently uncertain climate conditions, etc.) also have an impact on the use of these habitats.

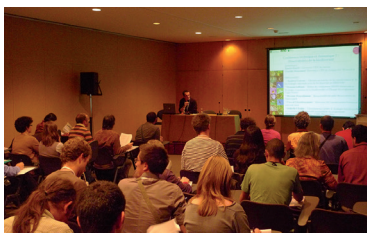


Support for farms is of fundamental concern for the future of these areas

## 1 - Support for breeders

Optimize the use of their pastoral resources and their independence to ensure the conservation of open landscapes and their biodiversity.

- + 40 volunteer farms will be given tailored support for pastoral and ecological management of their open habitats throughout the project.



## 2 - Information, communication and development of awareness

- Organisation of meetings between stakeholders to exchange and disseminate knowledge: local technical workshops, transnational seminar.
- Produce and publish information using various methods: books, technical and educational booklets, web site, videos, etc...

## 3 - Design and provision of training

Aimed at farmers, farm and natural park technicians, students and teachers, elected representatives and representatives of government bodies.



Let's work together to share our knowledge !



Association for the conservation,  
management and exploitation  
of natural areas



National technical research  
and development institute  
to support stock-breeding  
and the agricultural industry



Public body for the protection of the natural,  
cultural and landscape heritage of the region  
in relation to the human activities carried out here



Educational institute for the agro-environment,  
a component of Montpellier SupAgro, focussing  
on the management of rural natural areas and  
environmental education



## + Contacts

CEN L-R  
Parc Club Du Millénaire Bât.31,  
1025 Avenue Henri Becquerel  
34000 Montpellier  
04 67 02 64 98

Institut de l'élevage  
2 Place Pierre Viala  
34060 Montpellier Cedex 1  
04 99 61 21 90

Parc National Des Cévennes  
6 Bis, Place Du Palais  
48400 Florac  
04 66 49 53 00

SupAgro Florac  
9 Rue Célestin Freinet  
48400 Florac  
04 66 65 65 65

With a 50% contribution from  
the LIFE financial instrument  
of the European Union

LIFE+ MIL'OUV - LIFE12 INF/FR/000735



[www.lifemilouv.org](http://www.lifemilouv.org)