

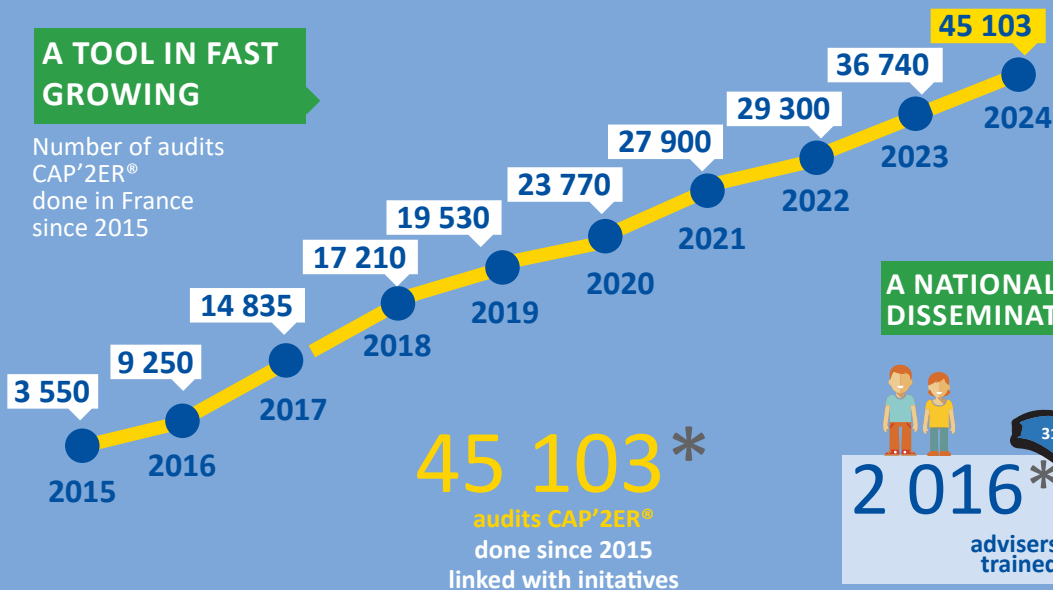


# CONTINUES HIS DEPLOYMENT

To access the environmental performance and sustainability of farms

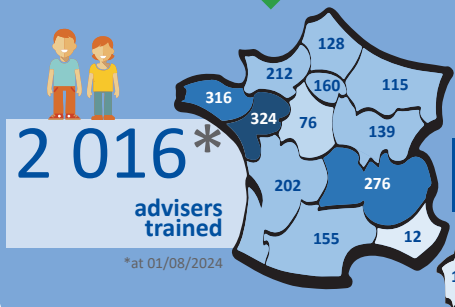
## A TOOL IN FAST GROWING

Number of audits CAP'2ER® done in France since 2015

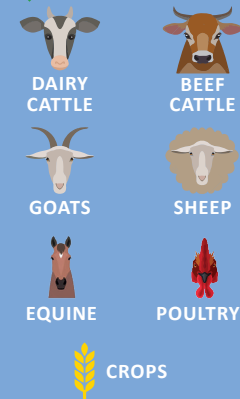


**45 103\***  
audits CAP'2ER®  
done since 2015  
linked with initiatives

## A NATIONAL DISSEMINATION...



## A WHOLE FARM ASSESSMENT



## A LARGE PARTNERSHIP



## ... AND EUROPEAN TOO

And over **100** advisers trained in Europe

