

## > Statistic outline of French genetic organisation [2019]

### > Livestock

Species	Total number	% registered	Animals in performance recording	Number of inseminated females
Dairy cows	3 714 000	63 %	2 437 250	2 315 068 (v) 864 166 (g)
Beef cows	3 914 000	38 %	1 014 900	406 872 (v) 214 433 (g)
Dairy sheep*	1 609 000	54 %	871 193	515 075
Meat sheep	3 796 000	8 %	314 550	129 545
Goats	865 000	23 %	385 000	73 684

\* 2019 data

Sources : Institut de l'Élevage, ALLICE, FCEL, ANIO, CNBL, BDNI, SSP, CAPGENES

The French genetic organisation for ruminants is characterized by :

- > involvement of a large number of breeders (approximately 70 000) in the selection of the various breeds,
- > very wide bases of selection (registration and performance recording for a great number of animals),
- > an intensive progeny testing of AI males, which is widely taken over by genomic evaluation,
- > a high genetic level,
- > a significant genetic progress in all breeds and species.

Within the framework of a system of Quality Management, the breeders organisations combine their means and skills to provide farmers reliable results to lead the selection of their breeds.

NB: - Except indications, the figures refer to the calendar year 2017.

- Raw performances being obtained in different environments, direct comparison between breeds should be avoided.

## > Dairy Cattle

Breeds	Total number of cows	Recorded cows	Bulls			AI by bulls species (2018)
			Genotyped (Valogène)	Progeny tested	Marketed after evaluation	
Prim'holstein	2 378 278	1 565 497	6 564	0	117	3 473 316
Montbéliarde	617 505	427 748	1 549	24	147	700 811
Normande	308 695	189 039	1 635	0	66	446 342
Abondance	45 016	24 412	212	20	19	39 965
Brune	25 424	15 818	78	0	12	44 051
Simmental Française	24 990	16 371	230	0	4	50 376
Pie-rouge	14 323	9 473	170	0	12	39 960
Tarentaise	13 799	8 548	118	18	18	14 664
Jersiaise	18 535	8 453	-	-	-	40 116

\* AI : Inseminations

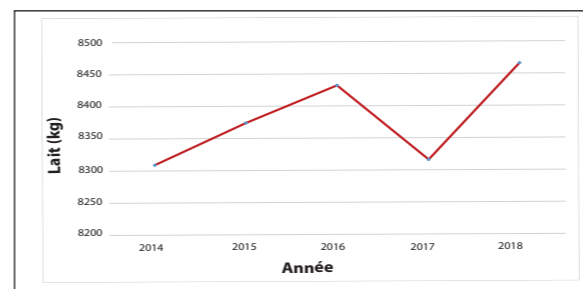
Sources : Institut de l'Élevage, ALLICE, FCEL, BDNI

### > Milk recording (305 days lactations adjusted to adult level)

Breeds	Qualified Lactations	Lactation length (days)	Milk yield (kg)	Fat (kg)	Fat (%)	Protein yield (kg)	Protein (%)	Crude protein (%)
Prim'holstein	1 565 497	344	9 055	354	39,1	284	31,4	33,1
Montbéliarde	427 748	311	7 302	282	38,6	239	32,8	34,5
Normande	189 039	327	6 664	278	41,7	228	34,1	35,9
Abondance	24 412	295	5 655	205	36,3	186	32,8	34,6
Simmental française	15 818	307	6 576	261	39,8	220	33,5	35,2
Brune	16 371	339	7 174	297	41,4	243	33,8	35,6
Pie-Rouge	9 473	335	7 949	335	42,1	261	32,8	34,5
Tarentaise	8 548	278	4 579	169	36,9	148	32,4	34,1
Jersiaise	8 453	329	5 037	277	54,9	192	38,1	40,1
All breeds	2 383 539	334	8 370	328	39,2	267	31,9	33,6

## > Beef Cattle

### > Evolution of the average production (305 days lactations adjusted to adult level)



Sources : Institut de l'Élevage, FCEL

### > Genetic and phenotypic trend (recorded cows)

Breeds	Progress from 2007 to 2016	Milk (kg)	Fat (%)	Protein (%)
Prim-holstein	Phénotypic	+ 259	- 0,1	=
	Genetic	+ 707	- 0,7	+ 0,4
Montbéliarde	Phénotypic	+ 631	+ 0,1	+ 0,5
	Genetic	+ 599	- 0,1	+ 0,5
Normande	Phénotypic	+ 408	- 0,5	+ 0,1
	Genetic	+ 634	=	+ 0,7
Abondance	Phénotypic	+ 322	- 0,4	+ 0,1
	Genetic	+ 326	- 0,4	=
Simmental française	Phénotypic	+ 595	=	+ 0,5
	Genetic	+ 531	- 0,1	+ 0,3
Brune	Phénotypic	+ 417	+ 0,4	+ 0,4
	Genetic	+ 407	+ 0,2	+ 0,5
Pie Rouge*	Phénotypic	+ 615	+ 0,5	+ 0,5
	Genetic			
Tarentaise	Phénotypic	+ 167	+ 1,4	+ 0,4
	Genetic	+ 404	+ 0,5	+ 0,3

Sources : Institut de l'Élevage, INRA

\*Pie Rouge and Prim'Holstein species are gathered together in the genetic reports

Breeds	Total number of cows	Recorded cows	Bulls			AI*	
			Genomic breeding value	Performance tested	Progeny tested	Pure Breed	Crossing
Charolaise	1 410 623	371 126	16 092	641	72	342 868	339 143
Limousine	1 100 979	275 290	6 166	772	22	124 783	198 934
Blonde d'Aquitaine	474 450	157 916	1 593	325	20	142 850	35 301
Salers	216 625	57 497	-	101	-	13 604	4 367
Aubrac	213 869	84 476	-	132	-	17 840	4 604
Parthenaise	50 708	26 235	-	98	-	18 954	7 233
Rouge des Prés	34 857	18 140	-	73	-	9 271	1 131
Gasconne	17 724	8 771	-	79	-	2 270	701
Bazadaise	3 485	2 224	-	-	-	1 216	3 108
Blanc Bleu	11 508	3 434	-	-	-	7 465	568 340
All breeds	3 534 828	1 005 109	23 851	2 221	114	681 121	1 162 862

2018 campaign data

Sources : Institut de l'Élevage, ALLICE, FCEL, SCEES, BDNI

### > Beef recording

Breeds	Weight 210 days (kg) <small>(calves born during campaign 2018)</small>		Weight at 1 year (kg) <small>(calves born during campaign 2015)</small>	
	Males	Females	Males	Females
Charolaise	302	267	503	390
Limousine	293	265	490	378
Blonde d'Aquitaine	301	277	513	395
Salers	272	240	465	357
Aubrac	272	236	418	334
Parthenaise	279	250	487	360
Rouge des Prés	291	267	516	385
Gasconne	254	232	379	319
Bazadaise	240	230	344	334
Blanc Bleu	268	249	422	367

Sources : Institut de l'Élevage, FCEL

> Dairy sheep

Breeds	Total number of ewes *	Recorded ewes *	Rams			IA *
			Genotyped	Performance tested *	Progeny tested **	
Lacaune	1 091 000	677 236	3 051	2 911	277	423 830
<b>Pyreneans breeds</b>						
- Basco-béarnaise	81 000	34 009	221	221	61	16 052
- Manech tête noire	74 000	20 624	117	113	33	5 935
- Manech tête rousse	278 000	107 200	638	638	153	61 222
Corse	85 000	32 124	149	241	22	8 036
<b>Total</b>	<b>1 609 000</b>	<b>871 193</b>	<b>4 176</b>	<b>4 124</b>	<b>546</b>	<b>515 075</b>

\* 2019 Data

Sources : Institut de l'Élevage, ANIO, CNBL, SIEOL

> Meat sheep

Breeds	Total number of ewes *	Recorded ewes *	Performance tested rams	Progeny tested rams	AI
<b>Specialized meat breeds</b>	946 000	78 441	1 388	66 (boucher)	157 586
<b>Hardy meat breeds</b>	2 518 000	208 681	2 682	117	121581
<b>Meat cross-breeds</b>	332 000	27 428	-	-	-
<b>Total</b>	<b>3 796 000</b>	<b>314 550</b>	<b>4 070</b>	<b>130</b>	<b>279 437</b>

\* 2018 campaign Data

**Specialized meat breeds** : Berrichon du Cher, Charmoise, Ile de France, Rouge de l'ouest, Suffolk, Texel, Vendéenne...

**Hardy meat breeds** : Blanc du Massif Central, Causses du Lot, Lacaune, Limousine, Mérinos d'Arles, Noire du Velay, Préalpes du sud, Rava, Romane, Tarasconnaise...

Sources : Institut de l'Élevage, ANIO

> Results for 10 main breeds (2017)

Breeds	Number of lambing	Ewes					
		Prolificity ewes natural oestrus	Prolificity ewes induced oestrus	30 d.Std weight males simples (kg)	30 d.Std weight males twins (kg)	70 d.Std weight males simples (kg)	70 d.Std weight males twins (kg)
Causses du Lot	26 538	1,64	1,74	12,6	10,6	-	-
Romane	26 017	2,16	2,08	13,8	11,7	28,1	24,0
Blanc Massif Central	20 322	1,58	1,70	13,5	11,6	-	-
Lacaune viande	16 054	1,95	2,05	13,6	11,7	-	-
Mérinos d'Arles	11 997	1,25	1,50	12,5	10,2	-	-
Ile de France	9 762	1,75	1,92	14,9	12,6	29,4	26,2
Rava	8 220	1,59	-	12,5	10,5	-	-
Mouton Vendéen	6 896	1,72	1,85	13,9	11,3	-	-
Mouton Charollais	6 781	1,74	1,85	15,5	13,2	29,0	25,7
Limousine	7 401	1,38	1,56	12,3	10,5	-	-

Sources : Institut de l'Élevage

> Goats

Breeds	Total number of goats	Recorded goats	Progeny tested bucks (2017)	AI *
Alpine	495 000	151 450	60	45 660
Saanen	315 000	96 376	79	28 024
Others	55 000	8 269	-	-
<b>Total</b>	<b>865 000</b>	<b>256 095</b>	<b>139</b>	<b>73 684</b>

\*These figures take into account AI data performed over the period October 01, 2017 to September 30, 2018

Sources : Institut de l'Élevage, FCEL, CAPGENES

> Results of goat milk recording

Breeds	Recorded goats	Lactation length	Milk yield (kg)	Fat (kg)	Fat (%)	Protein (kg)	Protein (%)
Alpine	151 450	313	942	35,6	37,8	31,5	33,5
Saanen	96 376	330	1 010	36,6	36,2	32,7	32,4

Sources : Institut de l'Élevage, FCEL

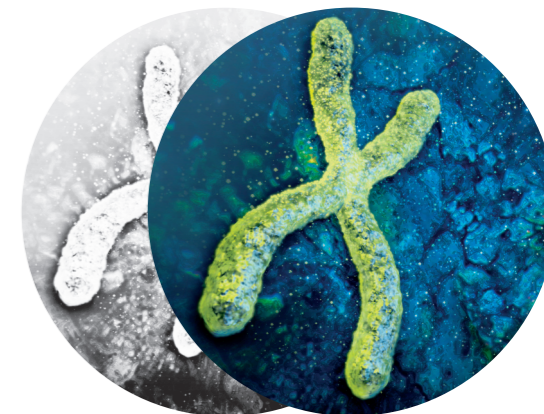
Published in February 2019 by  
France Génétique Élevage  
149 rue de Bercy - 75595 Paris CEDEX 12  
Tel 33 (0) 1 40 04 52 02 - Fax 33 (0) 1 40 04 52 99  
france-genetique-elevage@france-genetique-elevage.fr  
www.france-genetique-elevage.org



Realization : Véronique Frappreau (Institut de l'Élevage)  
Photo credit : La Chèvre - Pâtre - P. Pulvéry - D.R.  
réf. 0020200002



# Statistic outline of French genetic organisation 2019



February [2020]

> Dairy sheep recording 2018 (official milk recording)

Breeds	Number of recorded ewes	Lactation length	Milk yield (liter)
Lacaune	167 124	171	330
Basco-béarnaise	21 995	148	209
Manech tête noire	7 831	149	171
Manech tête rousse	66 248	162	239
Corse	16 865	188	160

Sources : Institut de l'Élevage, CNBL, SIEOL