

THE KEY FIGURES  
OF IDELE



# French goats 2025

## Milk and meat production



## ORGANISATION OF THE GOAT MILK AND MEAT PRODUCTION IN FRANCE

### • According to the 2020 agricultural census

Nearly **10,000 farms** declared having at least one goat (-33% compared to 2010) for a herd of 919,000 goats, including 908,000 managed by farms of at least 10 goats, whose number is much more stable (6,700 in 2020, -12%).

• **3,300 farms** (up by 16%/2010) with **cheese processing declared on the farm** (87 goats on average).

• **2,400 milk deliverers** estimated, accounting for 65% of the goats (251 goats on average).

• **1,000 other farms** (26 goats on average) **without declared cheese processing or possibility of milk delivery** (goat meat, eco-grazing, domestic cheese processing, mohair, leading and nursing Rove goats in pastoral herds, etc.).

### EVOLUTION OF THE NUMBER OF DAIRY FARMS

Source: GEB-Idele according to BDNI, Agreste and FranceAgriMer

	2020	2021	2022	2023	2024
Goat holders (minimum one goat - mainland France) - November 1st	9,975	9,961	9,507	8,826	9,865
Goat holders (more than 25 goats) - January, 1st	5,302	5,399	5,475	5,421	5,314
Milk delivering farms	2,456	2,423	2,454	2,444	2,307*

\* Provisional.

### NUMBER OF FARMS AND DISTRIBUTION OF THE DAIRY HERD

Source: GEB-Idele according to BDNI 2023

Farms >=25 dairy goat breeders	Number of farms	% of the total	Number of dairy goats	% of the total
25 to 49 goats	969	18%	36,000	3%
50 to 149 goats	2,087	39%	182,840	18%
150 to 299 goats	1,181	22%	256,510	25%
300 to 499 goats	657	12%	251,530	24%
500 to 999 goats	354	7%	250,000	22%
More than 1,000 goats	54	1%	74,650	7%
Total	5,302		1,028,900	

### DISTRIBUTION OF THE GOAT HERD ACCORDING TO THE AGE OF THE FARMERS (INCLUDING CO-HEADS OF FARMS)

Source: GEB-Idele according to MSA and SPIE

Goat farms	% of farmers (farms with more than 10 dairy goats)			% of dairy goats*
	2000	2010	2020	2020
Less than 40 years old	37	31	32	32
40-49 years old	34	32	26	26
50 years old and more	29	37	43	42
of which 55 years old and more			28	21

\* Including co-heads of farms.

In France, **agricultural censuses (RA)** take place every 10 years. These exhaustive surveys carried out on farms throughout the country constitute a complete snapshot of French agriculture. **The last census was carried out in 2020** but BDNI data and annual livestock surveys provide more recent information on the evolution of the number and size of farms.

# THE GOAT HERD IN FRANCE

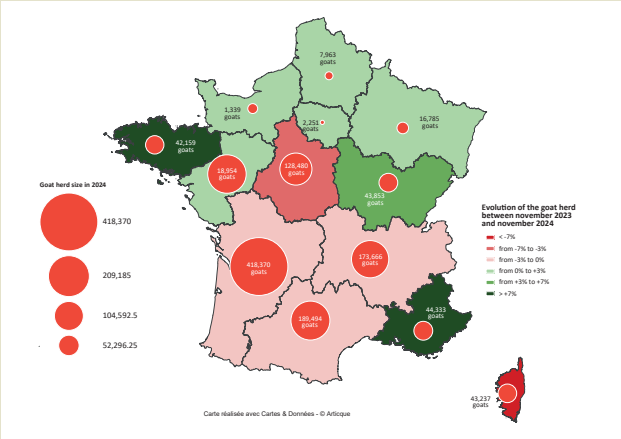
## GOAT HERD IN MAINLAND FRANCE ON THE 1ST OF NOVEMBER

Source: GEB-Idele according to Agreste - Herd survey 2024

(thousand head)	2010	2015	2019	2021	2022	2023	2024
Goats	1,400	1,200	1,380	1,380	1,320	1,300	1,307
- of which: female goats	962	850	920	935	910	900	907
- of which: female kids	317	286	330	350	310	290	220

## REGIONAL DISTRIBUTION OF THE GOAT HERD AS OF NOVEMBER 1, 2024 AND EVOLUTION COMPARED TO 2023

Source: GEB-Idele according to Agreste - Herd survey 2024



## MAIN GOAT REGIONS ACCORDING TO THE NUMBER OF FARMS\*, DAIRY GOATS AND FEMALE KIDS

Source: GEB-Idele according to Agreste - Herd survey

Goat farms	Number of farms	% of total	Number of goats and female kids	% of total	Average herd size
Nouvelle-Aquitaine	1,663	17%	383,500	32%	231
Pays de la Loire	617	6%	178,006	15%	289
Occitanie	1,518	15%	177,420	15%	117
Auvergne-Rhône-Alpes	2,228	23%	160,157	13%	72
Centre-Val de Loire	575	6%	122,881	10%	214
Bourgogne-Franche-Comté	585	6%	39,692	3%	68
Others régions	2,679	27%	151,544	12%	57
Mainland France	9,865	-	1,213,200	-	123

\* Farms with at least 1 goat.

# GOAT MILK PRODUCTION IN FRANCE

## GOAT MILK PRODUCTION

Source: Estimates by GEB-Idele according to Agreste

in millions of liters	2015	2020	2021	2022	2023	2024
Goat milk	595	669	697	714	709	690
- of which delivered to milk factories	77%	76%	74%	73%	74%	73%
- of which processed on farm	22%	24%	26%	27%	26%	27%

\* GEB-Institut de l'Élevage estimates.

## REGIONAL DISTRIBUTION OF THE MILK PRODUCTION DELIVERED AND PROCESSED ON FARM IN 2024

Source: Estimates by GEB-Idele according to Agreste

in millions of liters	Regional production	% of French production	Delivered milk	% of French deliveries	Milk processed on farm	% of French on-farm processed milk
Nouvelle-Aquitaine	231	34%	207	41%	25	13%
Pays de la Loire	120	17%	107	21%	13	7%
Occitanie	87	13%	67	13%	20	11%
Auvergne-Rhône-Alpes	75	11%	47	9%	27	14%
Centre-Val de Loire	91	13%	36	7%	54	29%
Others	83	12%	36	7%	48	26%

## EVOLUTION OF ORGANIC GOAT MILK PRODUCTION IN FRANCE

Source: GEB-Idele according to Agreste, FranceAgriMer and Agence Bio

	2015	2020	2022	2023	2024
Number of farms	810	1,280	1,480	1,540	1,590
of which: farms delivering milk	47	159	191	177	161
Number of goats	48 140	97,000	115,580	117,340	113,910
Organic milk delivered (1000 l)	4 179	16,672	26,531	25,847	23,155
Organic cheese made by factories (t)	967	2,319	2,246	1,490	1,001

## INSEMINATION

Source: GEB-Idele according to CapGènes

	2020	2021	2022	2023	2024
Number of inseminations	65,500	70,648	67,534	67,000	65,850
Alpine breed	41,900	47,334	43,897	44,890	43,460
Saanen breed	23,560	23,313	23,636	22,110	22,390

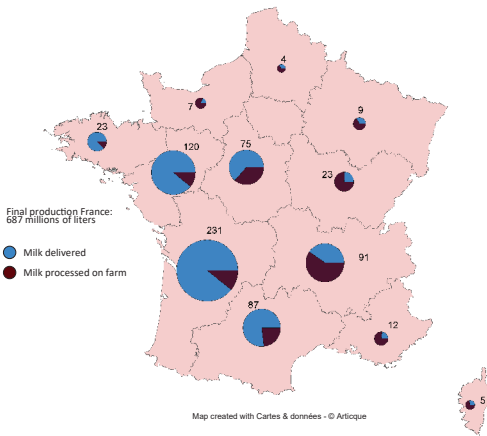
## AVERAGE MILK YIELD

Source: GEB-Idele according to Eliance

	2020	2021	2022	2023	2024
Number of lactations	232,915	235,778	233,461	226,442	223,132
Lactations/herd	158	161	159	156	157
Milk (kg/goat)	989	992	1,002	1,023	1,027
Lactation length (days)	321	321	327	332	337
Protein content in g/kg	33.4	33.6	33.6	33.6	33.8
Fat content in g/kg	37.6	37.7	37.7	37.4	37.8
Number of herds	1,473	1,457	1,466	1,456	1,420

REGIONAL GOAT MILK PRODUCTION IN FRANCE IN 2024

Source: Estimates by GEB-Idele according to Agreste



SUPPLY OF THE DAIRY INDUSTRY AND GOAT MILK PROCESSING

SUPPLY OF THE DAIRY INDUSTRY

Source: GEB-Idele according to FranceAgriMer

millions of liters of milk	2010	2020	2022	2023	2024
Milk collected by the industry	509	502	518	514	500
Imports	53	58	71	54	52
Total supply of the dairy industry	562	560	589	568	552

PRODUCTION OF GOAT CHEESE BY DAIRY FACTORIES

Source: GEB-Idele according to FranceAgriMer and Agreste

in tonnes	2010	2020	2022	2023	2024
All goat cheeses	89,156	99,237	98,944	96,852	97,779
Of which: fresh cheese	17,489	20,719	20,068	18,906	19,195
Of which: mature cheese	71,667	78,518	79,683	77,945	78,584
of which: log-like shaped cheese	49,569	55,288	54,326	54,659	54,802

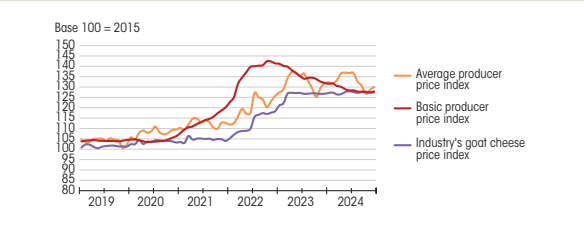
GOAT MILK PRODUCER PRICE FOR DELIVERERS

Source: GEB-Idele

in €/t 000 l	Standard milk price (35 fat/30 protein)			Average paid price		
	2022	2023	2024	2022	2023	2024
France	763	822	824	825	900	912

EVOLUTION OF GOAT MILK PRICE INDICES, INDUSTRIAL PRICES AND GOAT MILK AGRICULTURAL MEANS OF PRODUCTION PURCHASING PRICE INDEX

Source: GEB-Idele according to INSEE and SSP



CHEESE PROCESSED ON FARM IN 2024

Source: Estimates by GEB-Idele according to Agreste

Milk processed on farm: **around 187 millions de litres**.

Quantity of cheese processed on farm: **24-28,000 tonnes (estimates by GEB)**.

GOAT MILK CHEESE, WITH PROTECTED DESIGNATION OF ORIGIN (PDO)

Source: GEB-Idele according to INAO

	2023 Production	2024 Production	Évolution 2024/2023	% of on farm processed cheese	% of total goat PDOs
Banon	85	74	-13%	22%	1%
Brousse du Rove	16	16	=	100%	0%
Chabichou du Poitou	262	188	-28%	30%	3%
Charolais	107	90	-16%	63%	1%
Chavignol	723	656	-9%	12%	10%
Chevrolin	55	80	45%	8%	1%
Mâconnais	44	52	18%	11%	1%
Mothais sur feuille		200		-	3%
Pélardon	254	254*	-	44%	4%
Picodon	456	456*	-	32%	7%
Poulligny Saint-Pierre	171	153	-11%	40%	2%
Rigotte de Condrieu	41	31	-24%	100%	0%
Rocamadour	1,312	1,261	-4%	33%	19%
Sainte-Maure de Touraine	1,829	1,829	=	19%	27%
Selles-sur-Cher	1,031	1,013	-2%	12%	15%
Valençay	300	300	=	25%	4%
Total	7,460	6,816	-9%	-	-

\* Données 2023.

GOAT CHEESE MARKETS

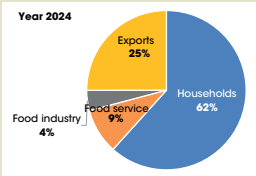
GOAT CHEESES PRODUCED IN 2024

Source: GEB-Idele according to FranceAgriMer

	Quantity (t)	% of the total	Evolution 2024/2023
All cheeses	97,779	-	+1%
- of which fresh cheese	19,195	19.6%	+2%
- of which matured cheese	65,505	67.0%	=
- of which log-shaped	47,047	48.1%	-1%
- of which "crottins"	4,521	4.6%	=
- of which round cheese	1,790	1.8%	+1%
- of which pyramids	156	0.2%	-8%

GOAT CHEESE'S MARKETS

Source :Estimates by GEB-Idele according to FranceAgriMer



PURCHASES OF GOAT CHEESE ON SUPERMARKETS' SELF-SERVICE AREAS

Source: GEB-Idele according to Circana

	2023	2024	% of change 2024/2023
Purchases (quantity, t)	50,754	51,200	+0.9%
Purchases (value, 1,000 €)	712,061	711,246	-0.1%
Average price (€/kg)	14.03	13.90	-0.9%

EVOLUTION OF THE SHARE OF MAIN BRANDS AND RETAILERS' BRANDS IN SUPERMARKETS' SELF-SERVICE AREA SALES

Source: GEB-Idele according to Circana

Quantity (of total)	2022	2023	2024
National brands	23,626 (46%)	22,589 (44%)	22,029 (43%)
Retailers' brands	23,023 (45%)	23,926 (47%)	29,944 (49%)
Other brands	4,604 (9%)	4,230 (9%)	4,205 (8%)

FOOD SERVICE'S SALES - 2023

Source: GEB-Idele according to Cniel X GIRA Food Services

	2021	2022	2023
Volume (t)	6,244	7,766	7,825
Value (1,000 €)	61,685	83,350	93,296
Average price without VAT (€/kg)	9.88	10.99	11.92

EXPORTS OF GOAT CHEESE

Source: GEB-Idele according to FranceAgriMer

	2022	2023	2024
Exports (t)	25,147	23,730	24,469

## GOAT MEAT

### EVOLUTION OF GOAT MEAT PRODUCTION AND GROSS INDIGENOUS CONSUMPTION

Source: GEB-Idele according to Agreste

	2020	2021	2022	2023	2024
Production (1000 head)	669	651	649	628	612
Production (tonnes cwe)	6,132	6,217	6,247	6,018	5,838
Consumption (tonnes cwe)	5,275	5,430	5,712	5,026	4,935

### GOAT MEAT PRODUCTION IN 2024

Source: GEB-Idele according to Agreste

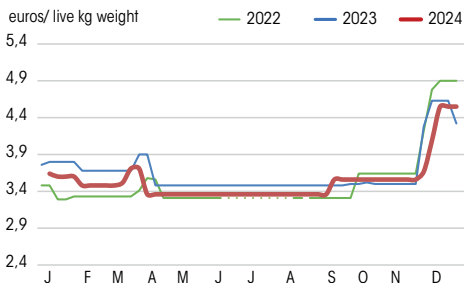
	Production (1000 head)	Production (tonnes cwe)	Carcass weight (kg)
Kids	473	2,700	5.7
Goats	139	3,138	22.6

### LIVE KID PRODUCER PRICE (€/KG)

Source: GEB-Idele according to FranceAgriMer

	2020	2021	2022	2023	2024
Easter period (weeks 9 to 19)	2.72	2.62	3.38	3.64	3.47
Maximum Easter price	2.70	2.87	3.58	3.90	3.71
Christmas period (weeks 45 to 52)	3.30	3.47	4.01	4.12	4.10
Maximum Christmas price	4.20	4.48	4.90	4.63	4.55

### Evolution of the live kid price



Source: GEB-Idele according to FranceAgriMer



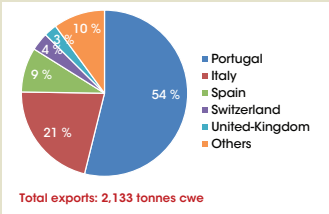
TRADE IN LIVE GOATS AND GOAT MEAT

Source: GEB-Idele according to Eurostat and French customs

	2010	2021	2022	2023	2024
Live animals (excl. Reproductive - head)					
- Imports	432	239	483	1,390	292
- Exports	1,980	2,728	3,647	2,539	2,388
Goat meat (tonnes cwe)					
- Imports	820	1,499	1,427	1,247	1,216
- Exports	2,590	2,286	2,026	2,060	2,133

FRENCH EXPORTS OF GOAT MEAT 2024

Source: GEB-Idele according to Eurostat



GOATS IN EUROPE AND IN THE WORLD

HERD, MILK AND MEAT PRODUCTION IN THE MAIN EU COUNTRIES

Source: GEB-Idele according to Eurostat (and estimates)

	Goat herd (1.000 head)		Milk production (1.000 tonnes)		Meat production (1.000 tonnes cwe)	
	2010	2024	2010	2024	2010	2024
European Union (27)*	13,300	10,484	2,250	2,500	60*	40
Greece	4,460	2,577	395	349	35.6	14.4
Spain	2,900	2,360	520	470	10.6	8.7
Romania	1,241	1,426	220	232	-	0.7
France	1,450	1,339	670	690	6.9	5.8
Italy	980	911	50	58	1.2	1.2
the Netherlands	380	552	180	427	1.4	2.7
Portugal	420	319	30	28	0.9	0.7
Cyprus	310	229	30	37	2.3	1.2
Bulgaria	360	150	60	20	-	-
Germany	150	168	35	-	0.4	0.4

\* Estimates by GEB.

WORLD GOAT HERD

Source: GEB-Idele according to FAOSTat

(million head)	2010	2020	2022	2023
World	918	1,122	1,116	1,127
- Of which Asia	511	572	550	547
of which India	137	132	153	154
of which China	151	145	132	129
- Of which Africa	349	490	508	522
- Of which Americas	37	39	39	39
- Of which Europe	18	16	15	15

WORLD GOAT MILK PRODUCTION

Source: GEB-Idele according to FAOSTat

1,000 tonnes	2010	2020	2022	2023
World	14,972	19,178	20,591	20,858
- Of which Asia	7,525	10,688	12,217	12,476
of which India	4,594	6,262	7,600	7,806
of which China	277	233	231	228
- Of which Africa	3,966	4,531	4,486	4,545
- Of which Americas	771	811	828	839
- Of which Europe	2,704	3,156	3,060	2,998

WORLD GOAT MEAT PRODUCTION

Source GEB-Idele according to FAOSTat

1,000 tonnes	2010	2020	2022	2023
World	5,256	6,179	7,205	7,464
- Of which Asia	3,764	4,499	5,460	5,710
of which India	522	1,413	1,414	1,589
of which China	1,992	2,464	2,465	2,501
- Of which Africa	1,195	1,436	1,460	1,495
- Of which Americas	133	137	134	135
- Of which Europe	135	89	100	84

•EU-27 CAP agricultural support: goat coupled support

Animal coupled supports have been modified with the CAP reform implemented in 2023, and the allocated budget decreases every year. But for the goat coupled aid, there has been little change. **In 2024, the unit amount was 14.56 euros per goat. In 2024, 5,004 farms received goat aid for 842,984 goats.**

**Eligible animals:** eligible goats must be at least 12 months old or have given birth by May 11th, 2025. The declared herd must be maintained on the farm from February 1st to May 11th, 2025 included.

**Limits:** goat aid is paid for a herd of at least 25 goats and is subject to a maximum of 400 goats per farm (with application of the French transparency for "GAEC" societies).